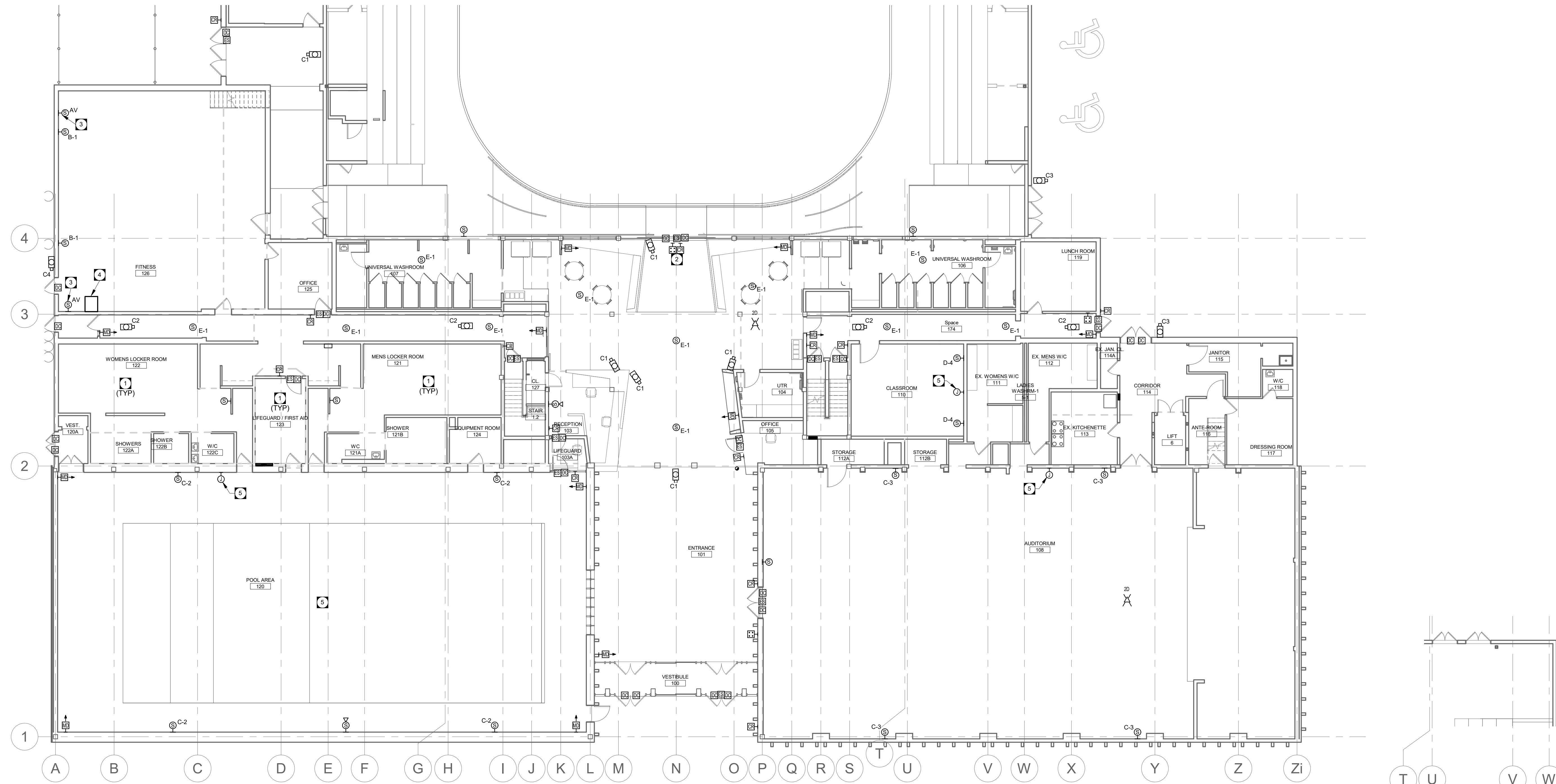


KEY NOTES

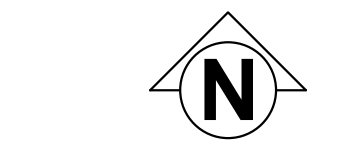
- 1 REMOVE AND REINSTALL CEILING/ROOF MOUNTED EQUIPMENT AND DEVICES AS REQUIRED TO ACCOMMODATE ROOF WORKS. SITE CONFIRM REQUIREMENTS WITH ARCHITECTURAL.
- 2 DEVICES MOUNTED VERTICALLY STACKED ON COLUMN.
- 3 EXISTING AV SPEAKERS TO BE RE-WIRED TO RELOCATED CCTV CABINET.
- 4 RELOCATED CCTV WALL MOUNTED CABINET FROM OFFICE 125. EXISTING FITNESS AV EQUIPMENT IN OFFICE 125 TO BE RELOCATED TO THIS CABINET. PROVIDE NECESSARY RACKING AND SHELVING. MOUNT CABINET ON PLYWOOD BACKBOARD.
- 5 PROVIDE TOA ELECTRONICS SO-MIX-24V, SO-MIX- PLATE AND AD-246 (OR APPROVED EQUAL IN ACCORDANCE WITH B7), HOMERUN 22.2 CORE SHIELDED CABLE FROM INFLIT PLATE TO SYSTEMS CABINET IN BASEMENT ELECTRICAL ROOM. CONNECT TO PRE-AMPLIFIER MIXER. COORDINATE LENGTH OF POWER SUPPLY CORD PRIOR TO ORDERING.

GENERAL NOTES

- A. INSTALL CONDUIT WITH NO MORE THAN TWO (2) 90° BENDS BETWEEN PULL BOXES, AND NO MORE THAN 100'-0" (30m) / 30m (100'-0") BETWEEN PULL BOXES. PULL BOXES SHALL BE INSTALLED FOR STRAIGHT THRU PULLS ONLY.
- B. PROVIDE COMPLETE CARD ACCESS SYSTEM. HOMERUN CONDUIT AND CABLE BACK TO BASEMENT PLYWOOD BACKBOARD. PROVIDE CONDUITS IN WALLS AND EXPOSED CEILING AREAS, AND J-HOOKS ABOVE T-BAR CEILING AREAS.
- C. PROVIDE COMPLETE CCTV SYSTEM. HOMERUN CONDUIT AND CABLE BACK TO BASEMENT SYSTEMS CABINET. PROVIDE CONDUITS IN WALLS AND EXPOSED CEILING AREAS, AND J-HOOKS ABOVE T-BAR CEILING AREAS.
- D. PROVIDE COMPLETE PA SYSTEM. HOMERUN CONDUIT AND CABLE BACK TO BASEMENT SYSTEMS CABINET. PROVIDE CONDUITS IN WALLS AND EXPOSED CEILING AREAS, AND J-HOOKS ABOVE T-BAR CEILING AREAS.
- E. HOMERUN ALL NEW INTRUSION CABLING FOR DEVICES BACK TO NEW INTRUSION PANEL LOCATED IN THE BASEMENT ON PLYWOOD BACKBOARD. PROVIDE CONDUITS IN WALLS AND EXPOSED CEILING AREAS, AND J-HOOKS ABOVE T-BAR CEILING AREAS.
- F. ALL VOICE/DATA, CCTV, INTRUSION, AND OVERHEAD PAGING CABLING SHALL BE FT6 RATED.



LEVEL 1 - SYSTEMS RENOVATION 1 3/32" = 1'-0" ES2.1
 LEVEL 1 NW CORNER- POWER RENOVATION 2 3/32" = 1'-0" ES2.1



This is a print of a document that has been electronically authenticated with technology authorized by the APEGM. The original is in electronic form.



This drawing must not be scaled. The contractor shall verify all dimensions and other data on site prior to commencement of work. Discrepancies, errors, and omissions are to be reported to Public City Architecture Inc. prior to proceeding with the Work.
 Drawings and specifications as instruments of service are the property of Public City Architecture Inc. the copyright in the same being reserved.
 No reproduction or revision to these drawings may be made without the permission of Public City Architecture Inc., and when made, must bear their name. All prints to be returned to Public City Architecture Inc. upon request.

Project
ST. JAMES CIVIC CENTRE

Drawing
LEVEL 1 RENOVATION - SYSTEMS PLAN

Drawn By: JP
 Review By: MP

Scale: As indicated
 Tender No: 1176-2019

Date: 11/06/19

Sheet: **ES2.1**